

OKAY, I'LL ADMIT it. I am completely, utterly passionate about light. I love the sun shining through my windows, and in summer the patio or back yard is definitely where you'll most often find me.

So the minute I step into the first showhome here at Chestnut in Cloverdale, I know whoever designed and built these homes is truly a kindred spirit. The living room is dappled with sunlight — like a living echo of a Monet painting. I find myself drawn irresistibly to the French doors with overhead transom and side windows. Outside is a covered balcony significantly larger than my last home office and boasts a view of Golden Ears' snow capped peaks that would be tough to beat.

"Spectacular isn't it?" says sales manager Karen McDonald who's just arrived. But as I'm about to discover, it's far from just the view that's spectacular.

THE FINEST OF FEATURES

The main floor has a distinct ambiance of space and welcoming. Nine-foot ceilings, oversized windows everywhere, bamboo flooring, and a subtle sense of "flow" — this would be easy to come home to, really easy.

country roads | city living

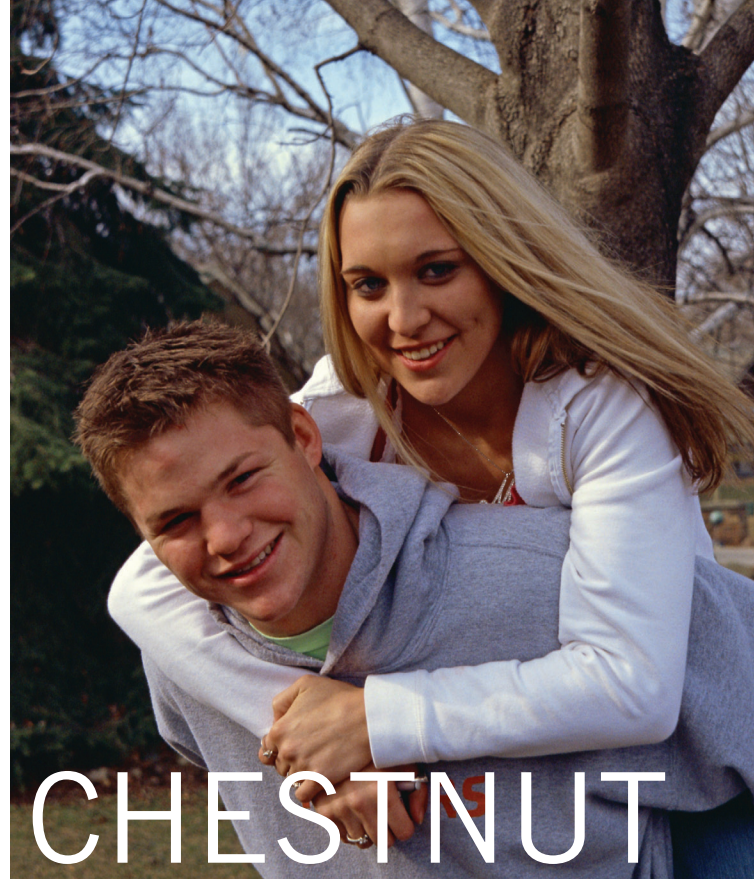
By Susan M Boyce

"Did you know bamboo is four times harder than oak?" Karen asks. I didn't. I did know it's genuine hardwood — not laminate — it's gorgeous, and that it's a Chestnut standard. "Bamboo gives a very contemporary look plus it's environmentally friendly." It's also a perfect counterpoint to the living room's decidedly urban-chic fireplace in acid stained, metallic finish — a detail I've rarely seen outside of custom homes.

"Bamboo flooring gives a very contemporary look plus it's environmentally friendly."

Karen McDonald

The kitchen too boasts a sophisticated, Yaletown look — granite counter tops and centre island, an abundance of storage, horizontal wood grain cabinetry, plus a perennial personal favourite, a large window over the sink. I take a peek outside admiring the many mature cedars that have been preserved to complement the new landscaping. "You won't often find a townhome with fenced yards as big as that," Karen says. She isn't kidding either — lots of room here for the kids to play or for friends and family to gather.



We check out the main floor flex-space — here designed as a full, walk-in pantry and workstation — wander through the three generously sized bedrooms upstairs, and talk about the convenience of having a double, side-by-side garage.

COME HOME TO A COMMUNITY

"Because we have five buildings and only 22 homes, almost half are end units," Karen says. "And these two," she points to the site plan, "will be huge and quite unique within Chestnut — a real alternative to both stand alone houses and townhomes."

Even better, she adds, a true sense of community is already developing. "Chestnut is a very intimate, boutique-style development, more like a village than a strata. People will know their neighbours here. And that's a good thing."

Chestnut offers a total of only 22 homes ranging between 1,330 and 2,140 square feet and priced from just \$265,900. Chestnut celebrates its grand opening on Saturday, February 25th with invitation only priority previewing on Friday, February 24th. After the 25th, the Chestnut presentation centre and two display homes will be open 1:00 to 5:00 pm daily except Fridays at 6033 - 168th Street in Cloverdale. Better hurry because almost 25 percent of these homes are already pre-sold. For more information call 604-760-7224, or you can visit on the web anytime at www.chestnuthomes.ca.